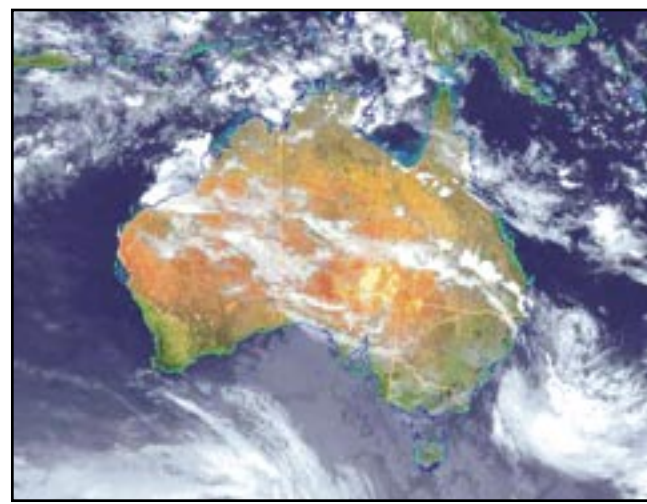
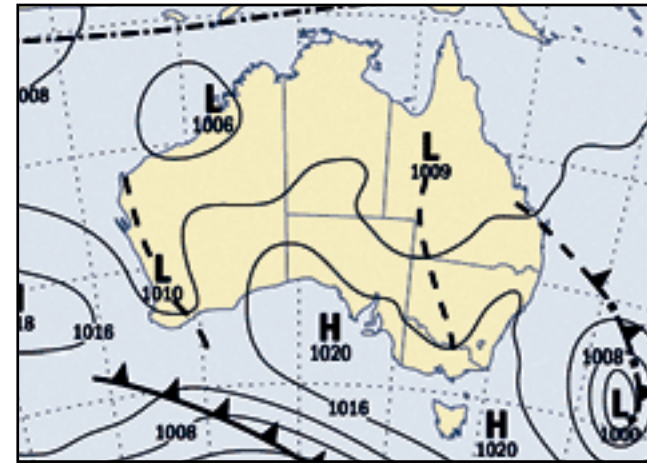


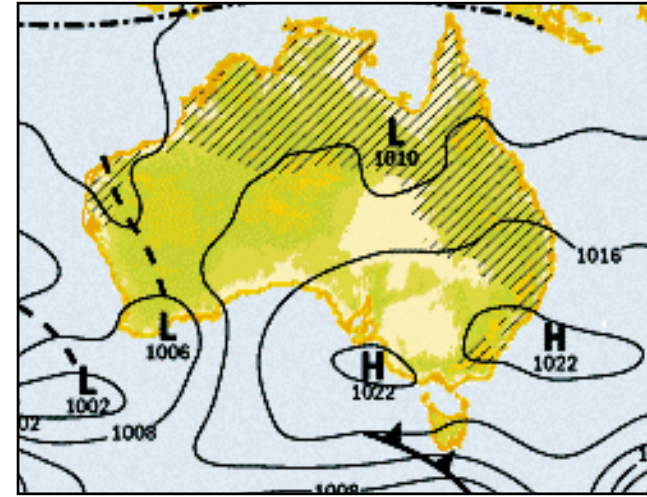
## YESTERDAY



## 10AM TODAY



## 10AM TOMORROW



## BROKEN HILL

Today	Tomorrow	Friday
Mostly sunny. Winds south to southeasterly averaging up to 30 km/h.	Sunny. Winds southeasterly averaging up to 30 km/h.	Partly cloudy. A shower or two in the late morning and afternoon.
<b>MIN 18°C</b> <b>MAX 32°C</b>	<b>MIN 18°C</b> <b>MAX 33°C</b>	<b>MIN 20°C</b> <b>MAX 32°C</b>

## YESTERDAY

**TEMPERATURE:**  
Minimum to 5pm: 16.0°C  
Maximum to 5pm: 31.0°C  
Average monthly Min: 18.6°C  
Average monthly Max: 31.9°C

**RAINFALL:**  
24 hours to 9am: 2.2mm  
Last five days: 4.8mm  
Total for February: 5.6mm  
February Avge: 25.5mm (3.2 days)

## LOWER WESTERN FORECASTS

**WARNINGS:** Were current at 5pm yesterday. Information at [www.bom.gov.au/weather](http://www.bom.gov.au/weather) or Ph: 1300 659 217 (Local call cost).

**PATTERN OVER THE NEXT FEW DAYS:**  
**Today:** Partly cloudy. The chance of showers and thunderstorms during the afternoon. Winds south to southeasterly averaging 15 to 25 km/h. Overnight temps falling to between 16 and 19.

**Tomorrow:** Sunny. Winds east to southeasterly averaging 15 to 25 km/h. Overnight temperatures falling to between 16 and 19 with daytime temperatures reaching the low to mid 30s.

**NEW SOUTH WALES:** A trough stretches from north-western New South Wales to the central coast with a weak low off the coast. The low and trough will move slowly east today as a high moves south of the Bight extending a ridge to the south coast. The low will move towards New Zealand tomorrow and Wednesday and the trough will stall over the central north and weakens as the high moves over the southern Tasman Sea extending the ridge to the north coast. The high is expected to be slow-moving.

## DARLING RIVER LEVELS

**LATEST REPORT FROM NSW STATE WATER**

	HEIGHT	CHANGE	FLOW
Bourke	10.73m	↑ 36cm	44,394
Louth	9.06m	↑ 8cm	31,380
Tilpa	9.67m	↓ 4cm	31,039
Wilcannia	9.75m	↓ 5cm	30,346
Menindee Weir 32	6.99m	→ 0cm	34,267
Pooncarie	6.61m	↑ 2cm	13,094
Burtundy	6.31m	↑ 2cm	14,576

## THE CITIES

Adelaide	Sunny	29
Brisbane	Showers, possible storm	28
Canberra	Chance of a shower	24
Darwin	Afternoon shower or storm	32
Hobart	Partly cloudy	22
Melbourne	Partly cloudy	26
Perth	Partly cloudy	33
Sydney	Shower or two	25

## THE SUN

The sun sets tonight at ..... 7.48pm  
The sun will rise tomorrow at ..... 6.47am

**MARKET CLOSSES SATURDAY**  
**THIS IS YOUR LAST CHANCE FOR SENSATIONAL SAVINGS!**

**ALL LADIES FASHION SHOES NOW \$20**

**KIDS STUFF JUST \$10**

**TOYS & GAMES 75% OFF**

**NEW BALANCE JOGGERS KIDS \$40 ADULTS \$60**

**SAMPSONS shoe x** Open 10am – 5pm

**BDT PHOTO SALES**

10x15cm (Standard)	\$9.00
12x18cm (A5)	\$12.00
4 different photos on a page	\$20.00
16x24cm (A4)	\$20.00
30x42cm (A3)	\$60.00

**All photos are printed in colour.**  
Above prices do not include postage.  
Please allow 2-3 weeks for posted orders.  
All orders must be pre-paid.